

F2000 FUME FILTER UNIT INSTRUCTION MANUAL

Please read these instructions carefully before using this unit.

1. Product Overview

The F2000 is designed to filter laser cutting fumes from the Emblaser range of machines.

With a triple-filter design and powerful suction, the absorbing efficiency and filtration ratio can reach 99.97%. The purified air can be discharged directly indoors.

2. Packing list

ITEM	QUANTITY	REMARKS
Filtration Unit	1set	
Power Lead	1 piece	
Hose Adaptor	1 piece	75mm to 50mm exhaust hose
User Manual	1pcs	
Pre-Filter	5 pieces	Consumable. Inspect regularly.
Middle Filter	1 set	Consumable. Inspect regularly.
Main Filter	1 set	Consumable. Inspect regularly.

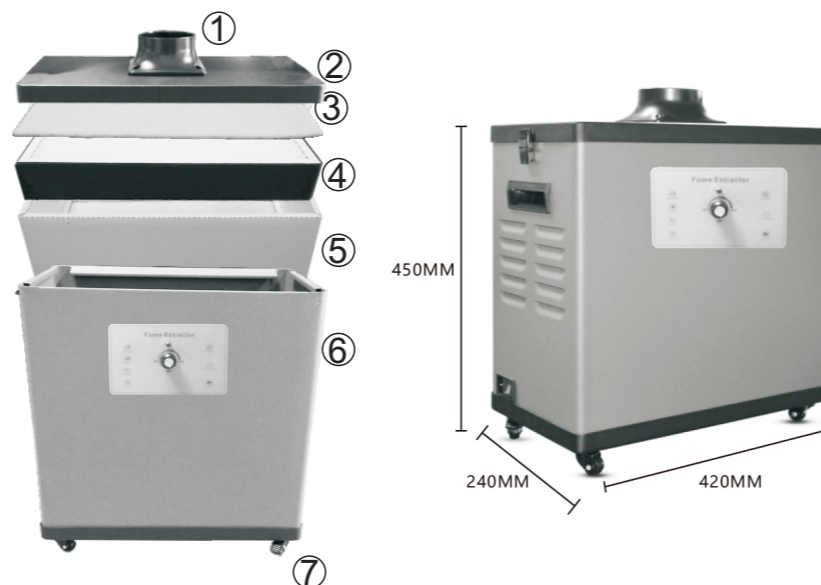
3. Safety Considerations

1. Do not use in environment temperature above 60 deg C.
2. Do not use in flammable, explosive or greasy environment.
3. Do not disassemble this unit for repair.
4. Do not replace filter elements while unit is running.
5. Hands or other objects should not touch the rotating impeller.

4. Check Before Using

1. Is there any external damage to the appliance?
2. Are all the filters correctly installed?
3. Is the top cover secured correctly?
4. Before plugging in, is the power switch is set to off position.

5. Structure and dimensions



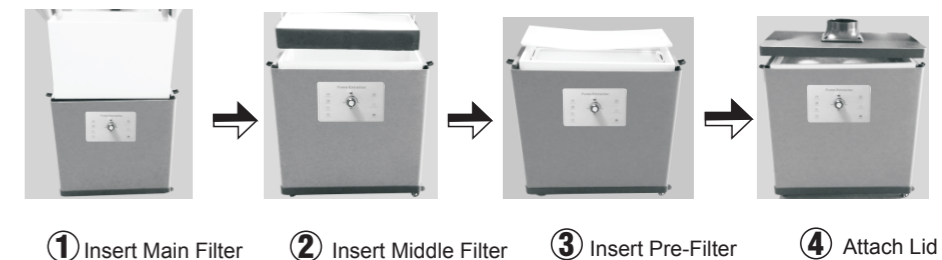
- ① Air inlet flange
- ② φ75 Top cover
- ③ Pre-filter
- ④ Middle Filter
- ⑤ Main Filter
- ⑥ Machine body
- ⑦ Roller wheels

6. Technical Specs.

Air Inlet Interface	φ75mm Flange
Input Voltage	AC220V /110V
Maximum Power	150W
Air Velocity	11m/s
Filtrating Efficiency	0.3μm 99.97%
Noise	<50dB
Systemic Flow	215m³/h
Dimensions	L425×W250×H410
Weight	15.0kg

7. Usage Instructions

7.1 Filter installation



7.2 Duct Installation

Install the duct on the flange of top cover as shown in the below pictures:



7.3 Operating the appliance

- 1: Plug in power cord.
- 2: Turn on the power switch. (Picture 1)
- 3: Set the speed adjustment knob to its middle position. (Picture 2)



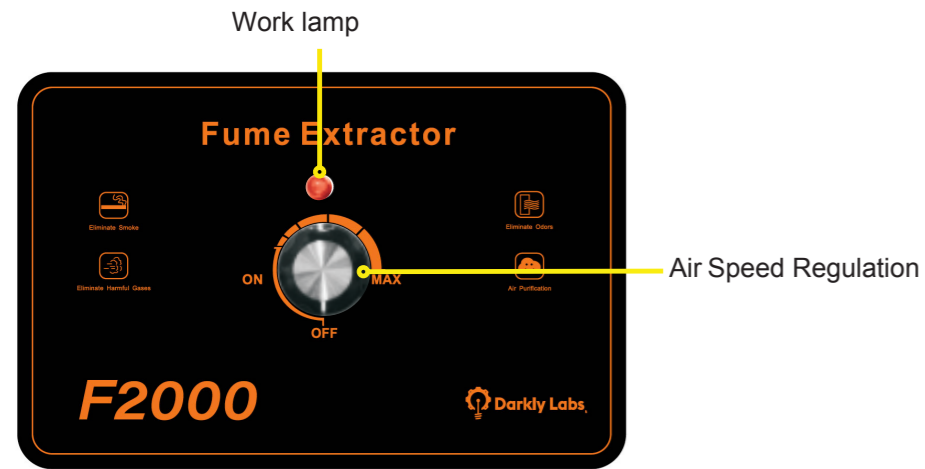
Picture 1



Picture 2

Increasing the speed will improve extraction, but also increase the fan noise.

8. Illustration of Control Panel



9. Troubleshooting

Problem 1.

The appliance works, but the air flow is very weak and suction power is greatly reduced OR the machine shuts down automatically after a certain time.

Cause: The filters have become saturated.

Solution: Open the top cover and inspect the filters. Replace as needed.

Problem 2.

Turn the power switch on and the indicator does not light up or the fan does not start.

Cause: Burnt fuse.

Solution: Replace fuse. See 'Replacing the fuse' section.

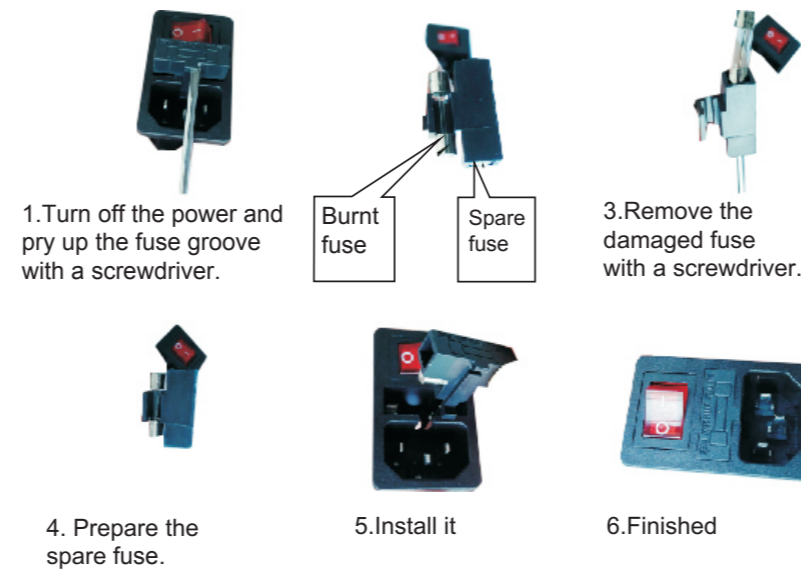
Problem 3.

Odors and smells are not being filtered.

Cause: Filters have become saturated.

Solution: Replace filters.

10. Replacing the fuse.

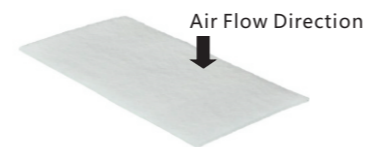


If the trouble remains after these troubleshooting steps, please contact your local reseller or support@darklylabs.com

9. Information about the filters

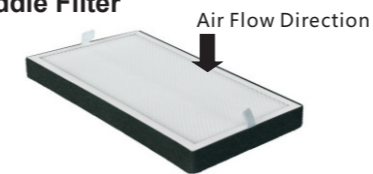
This product uses replaceable filtering consumables. When the consumables have been used to a certain extent, they need to be replaced, in order to guarantee the proper operation of this appliance.

1. Pre-filter



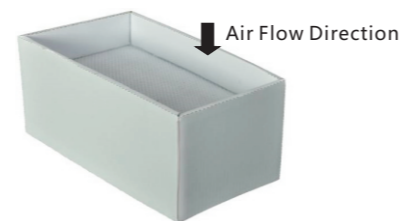
The Pre-Filter collects the large particulates from incoming fumes. Make sure it is installed with the rough side facing up. This filter should be checked and replaced regularly.

2. Middle Filter



The Middle Filter collects the medium to small sized particulates from incoming fumes. When this filter becomes blocked, suction through the appliance is affected. Check and replace this filter regularly.

3. Main Filter



The Main Filter removes odors and smells from incoming fumes. When you begin to smell odor from your appliance, it indicates this filter needs to be replaced.

11. Important Notices

1. This appliance is not to be used by persons (including children) with reduced physical, sensory or mental capabilities, or lack of experience and knowledge, unless they have been given supervision or instruction by a person responsible for their safety. Children should be supervised to ensure they do not play with the appliance.

2. The power input of this appliance shall be used within the specified nominal voltage scope (subject to power identification on the appliance body). It's strictly forbidden for the use of the appliance with excessive high or low voltage. If the ambient voltage is unstable, please turn off the appliance, unplug the power plug and use it again upon power stabilizing.

3. The appropriate environment temperature to operate this appliance is 10 to 60 degrees C. Never use it when the temperature is higher or lower than this temperature range.

4. When using this appliance, the humidity of the fumes and the dust sucked into the air inlet should be between 40% & 80%. If the humidity is excessively high, the filter element will degrade rapidly and the internal circuit will be damaged; never use this appliance when the humidity is higher than 80%.

5. The pre-filter is classified as a disposable consumable. Never wash this filter and attempt to reuse. Only use a pre-filter supplied by the appliance manufacturer.

6. Never use this appliance without a pre-filter installed. This will cause the subsequent filter stages to become blocked and degrade rapidly.

7. Never use this appliance without filters installed. This will damage the motor and control circuitry. Any faults caused to this appliance under the aforesaid condition shall be serviced at the user's own cost.

8. Never continue to use this appliance when the filter elements are blocked. This will greatly shorten the service life of the appliance and potentially cause damage to the appliance. Please clean and maintain the appliance regularly and replace the filter elements regularly to ensure the appliance is working in good condition.

9. Never attempt to open this appliance for maintenance by yourself. Always use an authorized repair person. Removal of damage to the warranty sticker on the machine will void any warranty.

12. Contact Information

Darkly Labs Support
support@darklylabs.com

Replacement filter sales
sales@darklylabs.com